

**Insights from heterogeneous structures of the 1999  $M_w$  7.6 Chi-Chi earthquake thrust termination in and near Chushan excavation site, Central Taiwan**

Wen-Jeng Huang<sup>1</sup>, Wen-Shan Chen<sup>2</sup>, Yuan-Hsi Lee<sup>3</sup>, Chih-Cheng Yang<sup>4</sup>, Ming-Lang Lin<sup>5</sup>, Cheng-Shing Chiang<sup>6</sup>, Jian-Cheng Lee<sup>7</sup>, and Shih-Ting Lu<sup>8</sup>

<sup>1</sup>Graduate institute of Applied Geology, National Central University, Taiwan, <sup>2</sup>Department of Geosciences, National Taiwan University, Taipei, Taiwan, <sup>3</sup>Department of Earth and Environmental Sciences, National Chung Cheng University, Chiayi, Taiwan, <sup>4</sup>Exploration and Development Research Institute, Chinese Petroleum Company, Taiwan, <sup>5</sup>Department of Civil Engineering, National Taiwan University, <sup>6</sup>National Museum of Natural Science, Taiwan, <sup>7</sup>Institute of Earth Sciences, Academia Sinica, Taiwan, <sup>8</sup>Central Geological Survey, MOEA, Taiwan

**Contents of this file**

Figures S1 to S3

**Introduction**

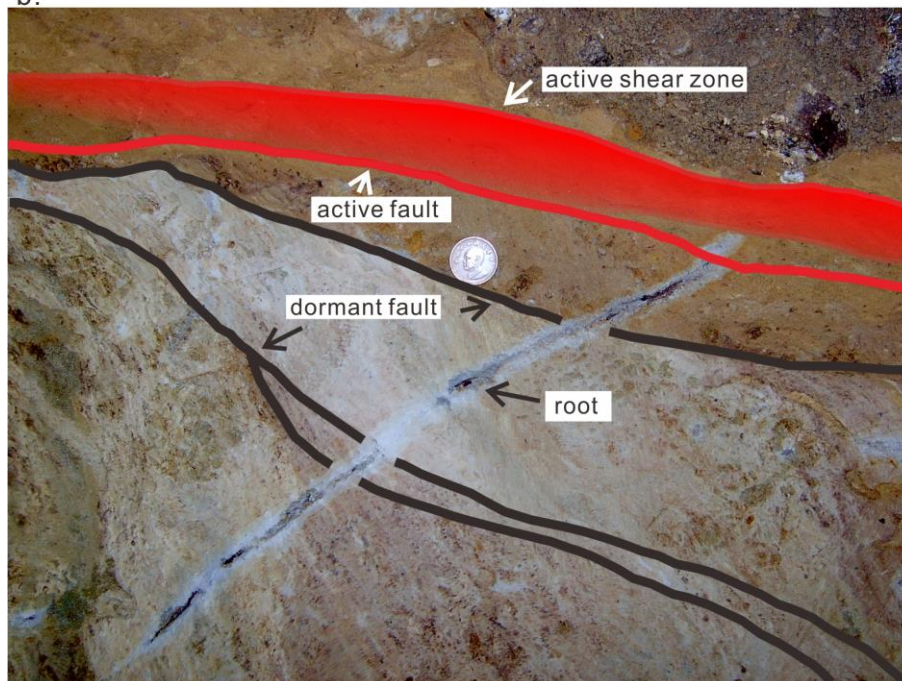
Two close-up photographs and one integrated figure of four trench logs are included.

***Delete all unused file types below. Copy/paste for multiples of each file type as needed.***

a.



b.



**Figure S1.** Root of betel-nut tree. Roots of betel-nut tree passes through three faults. Where the faults, as the two in black in the lower part of the example shown here, do not offset the root, it is judged that the faults did not reactivate during the 1999 Chi-Chi earthquake. The fault represented by a red line, though, slightly offsets the root so it may have activated and slipped a very small amount. On the contrary, the root does not pass through the shear zone, the red band in the upper part of the example shown here, so that shear zone is judged to have been activated during the 1999 earthquake. The diameter of the coin is 2.1 cm.



a.



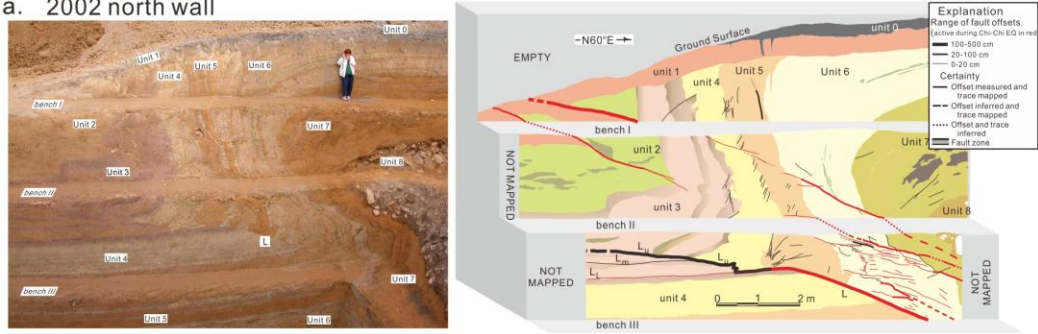
b.



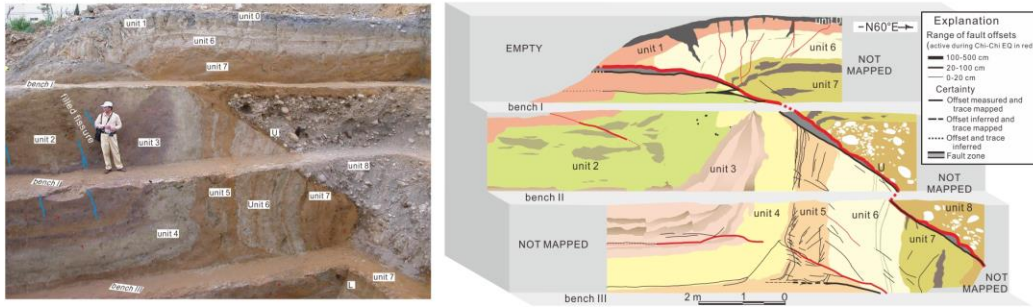
**Figure S2.** Mottled stripes displaced by small faults in Unit 5. The mottled stripes in the center of Figure (a) are locally sheared but some of them are still traceable. They are displaced 2.5 cm of a maximum. The lines in Figure (b) are either the narrow shear zones or small faults. The diameter of the coin is 2.1 cm.



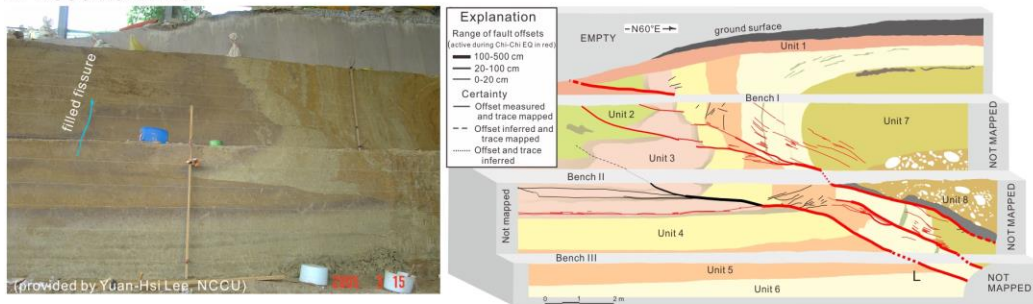
a. 2002 north wall



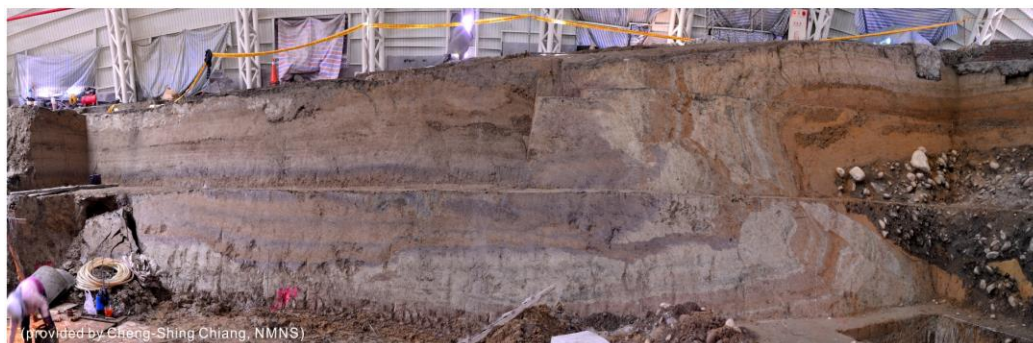
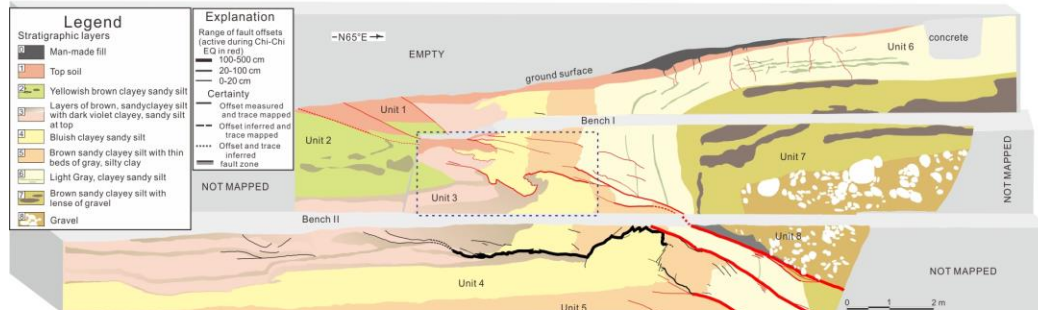
b. mirror image of 2002 south wall



c. 2005 north wall



d. 2012 north wall



**Figure S3.** Figures (a) and (b) are same as those in Figure 10 except 2002 south wall shown here is a mirror image. Figures (c) and (b) are same as Figures 15a and 15b.